

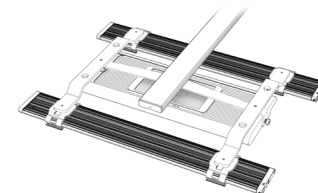
Hydra[®] Edge Tilt Mount Hardware

In the Box

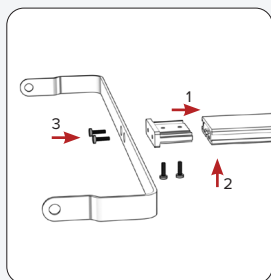


Notes:

If you are using a Blade Hybrid Kit, the Top Tilt Mount must be chosen. The Hybrid Kit will not work with the Rear Tilt Mount. *Flange screws are included to attach the Hybrid Kit to the Top Tilt Mount.*

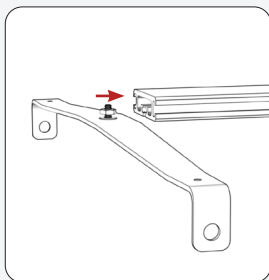


Attaching Rear Tilt



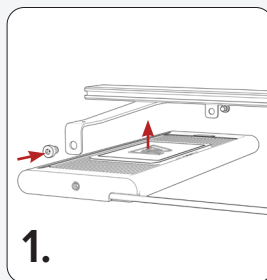
Insert the Rear Tilt Adapter into the front of the Horizontal Rail and secure it with the two small Cap Screws. Then, attach the Rear Tilt Bracket using the included Flat Head Screws.

Attaching Top Tilt

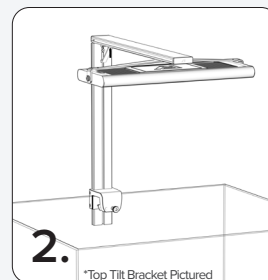


Insert a Flat Head Screw into the front of the Horizontal Rail. Loosely attach the Washer and Nut, then insert the Nut into the Horizontal Rail. Position as desired and tighten to secure.

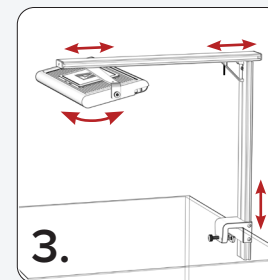
Attaching to Aquarium



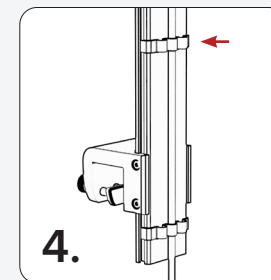
Attach the light to the Tilt Bracket using the included Mounting Screws.
Note: Ensure the power cord is positioned toward the back.



Place the assembly onto the edge of the aquarium at the desired mounting location.
Tighten the Aquarium Mounting Clamp fully to secure the HMS in place.

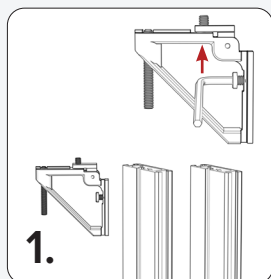


With the HMS secured, adjust the rails and bracket for height, depth, and angle. Loosen screws to adjust, then re-tighten.
Note: *Two people may be needed to prevent the light from falling.*

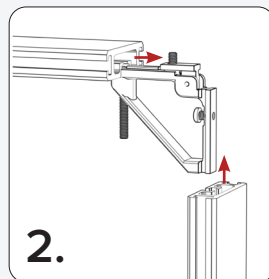


Use the HMS Clips to run the cable along the HMS, ensuring you create a drip loop.
Insert the HMS AI End Caps, if desired.

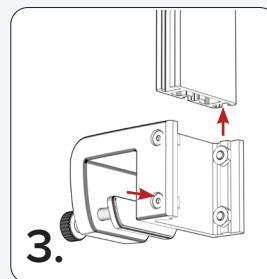
Setup HMS (sold separately)



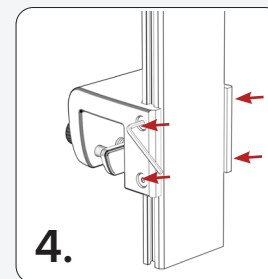
Identify the Vertical Rail, Horizontal Rail, and Pivoting Bracket.
Loosen the screws on the Pivoting Bracket slightly—just enough to allow the rails to slide into place.



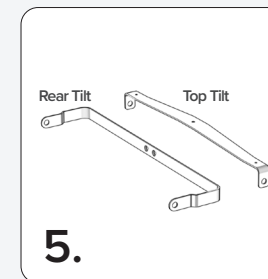
Insert the Horizontal and Vertical Rails into the Pivoting Bracket as shown above.
Tighten the screws on the pivoting bracket to temporarily secure the rails in place.



Loosen the screws on the Aquarium Mounting Clamp.
Slide the clamp onto the Vertical Rail and position it at the desired height for the HMS mount above the aquarium.



Using the included Hex Key, tighten the screws on both sides of the clamp to secure it in place.
Note: Height can be adjusted later by loosening these screws.



Choose your preferred Edge mounting bracket: either the Rear Tilt Mount or Top Tilt Mount bracket.

Need help or support? Scan the QR code to contact our service team or access additional setup guides.



<https://support.aquillumination.com/hc/en-us>