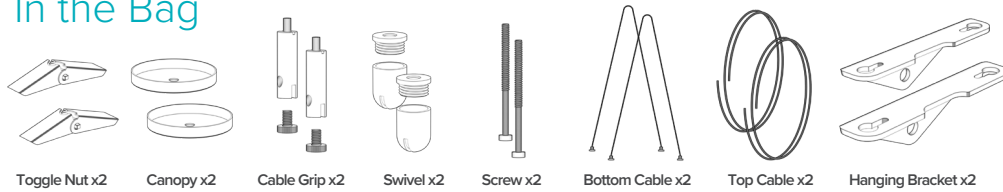
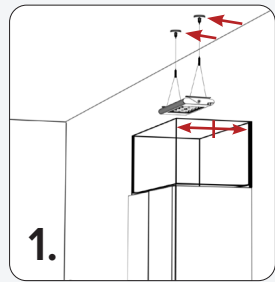


# Hydra® Edge Single Light Hanging Kit

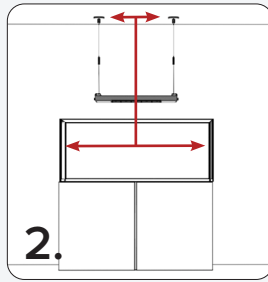
## In the Bag



## Identify Mounting Location

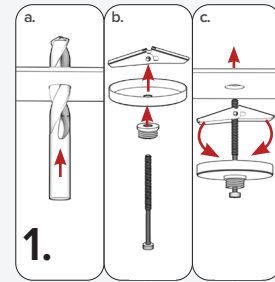


Choose a mounting spot above the aquarium. If centering the light, find the midpoint above the tank.

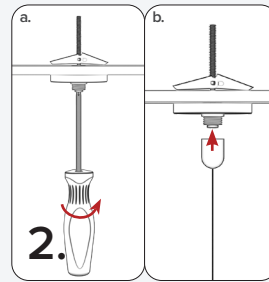


Once you've found the center point of the desired location, measure and mark out from center:  
**44HD: 5" (128mm)**  
**68HD: 7.125" (180.2mm)**

## Mounting to Drywall



**a.** Drill 1/2" holes at marked locations (*double-check placement*). **b.** Insert hanging screw (*threads up*) through swivel and ceiling base. **c.** Loosely add toggle nut (*fold wings*), push through hole.

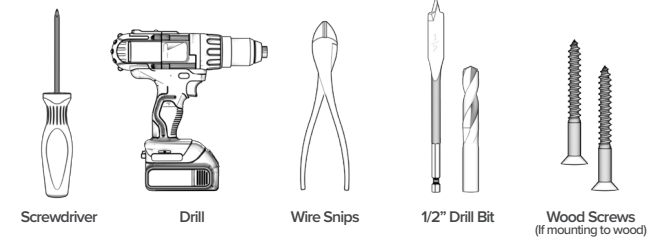


**a.** Tighten toggle nut until snug against the ceiling. **b.** Thread the swivel cap onto the mounting cables, then screw it onto the ceiling swivel base once installed.

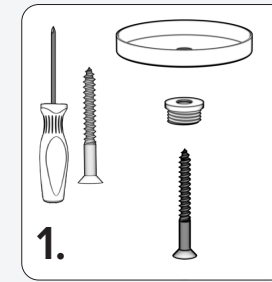
## Notes:

Recommended mounting height: 6-8" above aquarium.

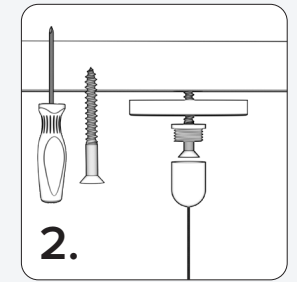
## Additional Items (not included)



## Mounting to Wood

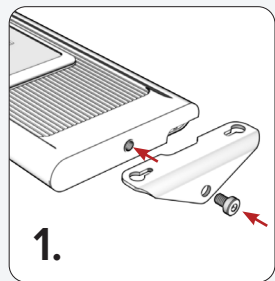


For mounting to a solid surface or stud, you'll need a standard threaded screw (*not included*). **Do not use the included toggle nut and screw, as these are only for mounting to drywall.**

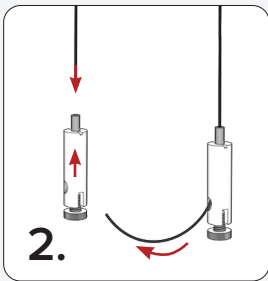


Drive screw through swivel base and ceiling base into solid surface. **Double-check location before drilling.** Thread swivel cap onto mounting cables, then attach to installed ceiling base.

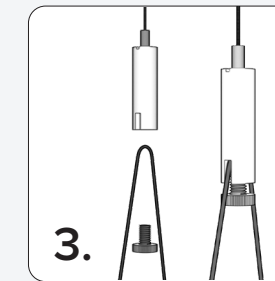
## Attaching Light



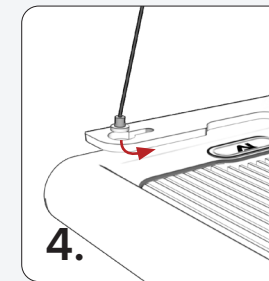
Use the included M8 screws and hanging brackets. Attach one to each side of the light as shown above.



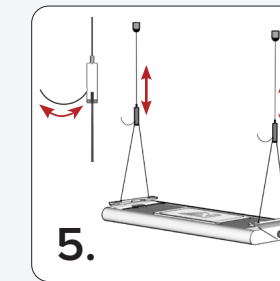
Thread the hanging mounting cable into the Cable Grip assembly, ensuring the lower thumb screws are removed first.



Attach the lower mounting cables to the Cable Grip assembly using the thumb screws removed earlier. **Note: Consider covering the aquarium or having assistance to prevent anything from falling in the tank.**



Attach the Hydra Edge to the lower mounting cables. **Note: Consider covering the aquarium or having assistance to prevent the light from falling into the tank.**



You can now make adjustments as needed. **Raise:** Pull cable at grip. **Lower:** Squeeze or push top of grip (releases cable). **Tilt (Front/Back):** Adjust lower cables by sliding to desired angle; re-tighten thumbscrew after. (Snip extra wire if desired)

**Need help or support?** Scan the QR code to contact our service team or access additional setup guides.



<https://support.aquallumination.com/hc/en-us>