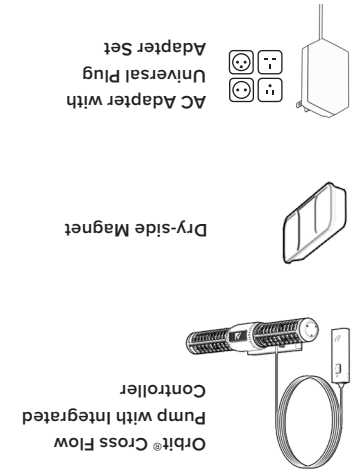
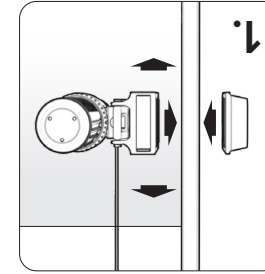


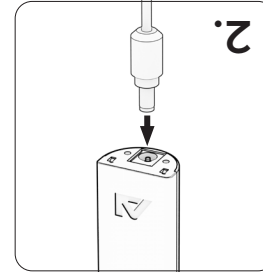
## In the Box



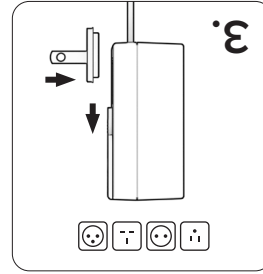
## Setup



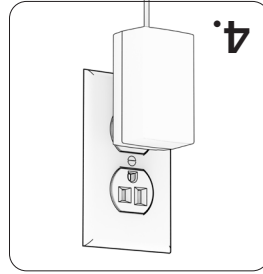
Place the Orbit Pump inside of the aquarium in the desired location and secure it with the Dry-side Magnet.



Plug the AC adapter into the Integrated Controller.

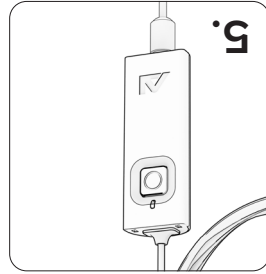


Attach the correct plug before attempting to plug in.



Plug the AC adapter into a wall outlet.

Always use a drip loop. Water damage is not covered under warranty.



Press the button on the Integrated Controller to cycle through speeds (1%, 20%, 40%, 60%, 80%, 100%).

# Orbit® Quick Start Guide

## Button Modes & Resets

### Feed Mode

The Orbit® will spin very slowly for 10 minutes (default setting) and then resume its set mode.

#### To Enter Feed Mode:

1. Hold the button on the Integrated Controller for **2-5 seconds** until the LED blinks white. The button LED will continue to blink white while in feed mode.

### All Off

All connected Orbit® pumps will stop.

#### To Power Off:

1. Hold the button on the Integrated Controller for **6+ seconds** until the LED fades out. The button LED will pulse white while pumps are off.

#### To Resume:

1. Press the button once.

### Soft Reset

A Soft Reset restarts the device but retains the schedule and settings.

#### To Perform a Soft Reset:

1. Unplug from power.
2. Reapply power.



## Connected Reset

A Connected Reset restarts the device and removes your schedule and settings but keeps the connection settings.

### To perform a Connected Reset:

1. Unplug from power.
2. Press and hold button.
3. Reapply power and wait for the LED to blink green.
4. Release button.

## Factory Reset

A Factory Reset restarts the device and removes your settings and schedule data, returning it to factory defaults.

Contact Support or visit [support.aquallumination.com](http://support.aquallumination.com) for troubleshooting before performing a factory reset.

### To perform a factory reset:

1. Unplug from power.
2. Press and hold button.
3. Reapply power and wait for the LED to blink red.
4. Release button.

## RF Exposure Statement

The user is cautioned to maintain a 20cm (8 inch) from the product to ensure compliance with RF exposure requirements.

## European Union - Disposal Information

According to local laws and regulations, your product should be disposed of separately from household waste. When this product reaches its end of life, take it to a collection point designated by local authorities. Some collection points accept products for free. The separate collection and recycling of your product at the time of disposal will help conserve natural resources and ensure that it is recycled in a manner that protects human health and the environment.

## CE Declaration of Conformity

The equipment complies with the Radio Equipment Directive 2014/53/EU. This equipment meets the following conformance standards:

EN 300 328, EN 300 489-1, EN 301 489-1, EN 301 489-17, EN 62479, EN 60950

Original Declaration of Conformity can be obtained from: <http://support.aquallumination.com>

### Aquallumination Orbit Cross Flow Pump

Model Number: OR2, OR4

FCC ID: W8271832

IC: 7349A-271832



# Safety Statements

**⚠ DANGER**

To avoid possible electrical shock, special care should be taken since water is employed in the use of aquarium equipment.

**⚠ WARNING**

If the plug or receptacle does get wet, DON'T unplug the cord. Disconnect the fuse or circuit breaker that supplies power to the appliance, then unplug and examine for presence of water in the receptacle.

**⚠ WARNING**

DO NOT immerse the driver or power supply in water. If the driver or power supply falls into the water, DON'T reach for it! First unplug it and then retrieve it. If electrical components of the appliance get wet, unplug the appliance immediately. Death or destruction of property may result.

- Do not operate any appliance if it has a damaged cord or plug, if it is malfunctioning or if it is dropped or damaged in any manner.
- Carefully examine the appliance after installation. It should not be plugged in if there is water on parts not intended to be wet
- Never yank cord to pull plug from outlet. Grasp the plug and pull to disconnect.
- Do not use appliance for other than intended use. The use of attachments, power cords, or accessories not sold by the manufacturer may cause an unsafe condition resulting in property damage, injury, or death..
- Position the aquarium stand and tank to one side of a wall-mounted receptacle to prevent water from dripping onto the receptacle or plug. A "drip-loop" should be employed for each cord connecting an aquarium appliance to a receptacle. A "drip-loop" is the part of the cord below the level of the receptacle (or the connector if an extension cord), to prevent water from traveling along the cord and coming in contact with the receptacle.

## LIMITED WARRANTY

Aperture Pet and Life warrants to the original purchaser only that the Product will be free from defects in material and workmanship under normal use for a period of thirty (30) days from the date of purchase of either one (1) year from the date of purchase – if the product is properly registered through the registration process below provided that the product is installed and used properly and consistent with the product manual. No representation or warranty by any Aperture Pet and Life salesperson, dealer, agent representative, employee, or any other individual or entity acting or purporting to act on behalf of Aperture Pet and Life, shall be binding upon Aperture Pet and Life other than as expressly set forth herein. This limited warranty applies only to the original purchaser and is not transferable from the original consumer purchaser. In the event of a limited warranty claim, proof of purchase will be required.

Aperture Pet and Life's warranty shall not apply: (i) to any damaged Aquallumination Lighting Product that has been subjected to accident, misuse, neglect, alteration, acts of God, improper handling, improper transport, improper storage, improper use or application, improper installation, improper testing or unauthorized repair, operation outside recommended parameters (as described in the applicable product manual, for example, damage from saltwater spray or heat), power fluctuation or failure, subjection to abnormal physical or electrical stress, use of incompatible products, non-approved power supplies/connections, or similar circumstances (ii) to any Aquallumination Lighting Product where product been exposed to water or (iii) to cosmetic problems or defects that result from normal wear and tear under ordinary use, and do not affect the performance or use of the product. Aperture Pet and Life's warranty applies only to a product that is manufactured by or for Aperture Pet and Life and identified by the Aquallumination trade name or product identification logo affixed to the product. If you notice a problem with your Aquallumination Lighting Product, do not attempt to repair it yourself. Any attempts at self repair shall void this limited warranty. Aperture Pet and Life shall not be held liable for damage to any aquarium, aquarium life forms, or other personal objects due to improper use of the device. If the product develops a covered defect within the one-year period, Aperture Pet and Life will, at its option, either repair or replace the Aquallumination Lighting Product without charge, provided that the Aquallumination Lighting Product is returned during the warranty period.

**NOTE: FOR THE ONE (1) YEAR WARRANTY TO BECOME EFFECTIVE, THE PRODUCT TO WHICH THIS LIMITED WARRANTY RELATES MUST BE REGISTERED WITHIN THIRTY (30) DAYS OF PURCHASE. INSTRUCTIONS FOR REGISTRATION ARE INCLUDED BELOW.**

- Do not install or store the appliance where it will be exposed to weather or to temperatures below freezing.
- If an extension cord is necessary, a cord with a proper rating should be used. A cord rated for less amperes or watts than the appliance rating may overheat. Care should be taken to arrange the cord so that it will not be tripped over or pulled.
- DO NOT attempt repairs yourself; return the appliance to the manufacturer for service or discard.
- ONLY the pump component of the product is waterproof.
- Close supervision is necessary when an appliance is used by or near children. Keep out of reach of young children.
- To avoid injury, do not contact moving or hot parts such as heaters, reflectors, lamp bulbs, and the like.
- Always unplug appliance from outlet before putting on or taking off parts, and before cleaning.
- DO NOT stick fingers or anything else into the propeller.

- Connect the equipment into an outlet on a circuit different from that to which the receiver is connected.
- Consult the dealer for help.

Caution: Any changes or modifications to this device not explicitly approved by manufacturer could void your authority to operate this equipment.

This device complies with part 15 of the FCC Rules. Operation is subject to the following two conditions: (1) This device may not cause harmful interference, and (2) this device must accept any interference received, including interference that may cause undesired operation.

This equipment complies with FCC RF radiation exposure limits set forth for an uncontrolled environment. This device and its antenna must not be located or operating in conjunction with any other antenna or transmitter.

The device has been evaluated to meet general RF exposure requirement. The device can be used in portable exposure condition without restriction.

## Industry Canada Compliance Statement

This device complies with Industry Canada license-exempt RSS standard(s).

Operation is subject to the following two conditions: (1) This device may not cause interference, and (2) This device must accept any interference, including interference that may cause undesired operation of the device.

The device has been evaluated to meet general RF exposure requirement. The device can be used in portable exposure condition without restriction.

Le présent appareil est conforme aux CNR d'Industrie Canada applicables aux appareils radio exempts de licence. L'exploitation est autorisée aux deux conditions suivantes:

(1) l'appareil ne doit pas produire de brouillage, et

(2) l'utilisateur de l'appareil doit accepter tout brouillage radioélectrique subi, même si le brouillage est susceptible d'empêcher temporairement le fonctionnement.

L'appareil a été évalué pour répondre aux exigences générales d'exposition aux RF. L'appareil peut être utilisé dans une condition d'exposition portable sans restriction.

## REGULATORY STATEMENTS

### FCC Compliance Statement

This equipment has been tested and found to comply with the limits for a Class B digital device, pursuant to part 15 of the FCC Rules. These limits are designed to provide reasonable protection against harmful interference in a residential installation. This equipment generates, uses and can radiate radio frequency energy and, if not installed and used in accordance with the instructions, may cause harmful interference to radio communications. However, there is no guarantee that interference will not occur in a particular installation. If this equipment does cause harmful interference to radio or television reception, which can be determined by turning the equipment off and on, the user is encouraged to try to correct the interference by one or more of the following measures:

- Reorient or relocate the receiving antenna.
- Increase the separation between the equipment and receiver.

**OBTAINING WARRANTY SERVICE:** If this product proves defective during the Warranty Period, contact Aperture Pet and Life (at the address listed below) for instructions on how to obtain warranty service.

Aquallumination an Aperture Pet & Life Brand  
Street Address: 2675 Commerce Center Blvd. Suite 101, Bethlehem, PA 18015  
Customer Service: +1 (515) 333-6703  
Website: <http://support.aquallumination.com/>  
Website: <http://aquallumination.com/>

Please be prepared with your product model and serial number, as well as a proof of purchase. DATED PROOF OF ORIGINAL PURCHASE IS REQUIRED TO PROCESS WARRANTY CLAIMS. - REGISTRATION OF YOUR PRODUCT SATISFIES THE PROOF OF PURCHASE REQUIREMENT. If you are requested to return your product to Aperture Pet and Life, you will be given a Return Materials Authorization (RMA) number. You are responsible for properly packaging and shipping your product to Aperture, this includes the cost of shipping and any applicable insurance (both to and from Aperture Pet and Life's factory). Aperture is not responsible for, and this limited warranty does not cover, damage to products incurred in shipping. Please take efforts to package your product properly. You must include the RMA number and, if the product is not registered a copy of your dated proof of original purchase when returning your product. Products received without an RMA number and, if applicable, dated proof of original purchase will be rejected. Do not include any other items with the product that you are returning to Aperture.

Repairs or replacements not covered under this limited warranty will be subject to charge at Aperture Pet and Life's then-current rates.

APERTURE PET AND LIFE DISCLAIMS ALL OTHER WARRANTIES WHETHER ORAL OR WRITTEN, EXPRESS OR IMPLIED, TO THE FULLEST EXTENT ALLOWED BY APPLICABLE LAW. NO IMPLIED WARRANTY OF FITNESS FOR A PARTICULAR PURPOSE OR MERCHANTABILITY SHALL APPLY EXCEPT AS REQUIRED BY APPLICABLE LAW. APERTURE PET AND LIFE DOES NOT AUTHORIZE ANY PERSON OR BUSINESS ENTITY, INCLUDING ITS AUTHORIZED DEALERS, TO CREATE FOR IT ANY OBLIGATIONS, LIABILITIES, OR OTHER WARRANTIES IN CONNECTION WITH THIS PRODUCT.

ALL WARRANTIES ARE VOID IF THERE IS DAMAGE TO THE AQUALLUMINATION LIGHTING PRODUCT THAT IS NOT A RESULT OF A DEFECT IN THE MATERIALS OR WORKMANSHIP. THE SOLE AND EXCLUSIVE REMEDY FOR ALL CLAIMS THAT YOU MAY HAVE ARISING OUT OF OR IN CONNECTION WITH YOUR USE OF THIS PRODUCT, WHETHER MADE OR

SUFFERED BY YOU OR ANOTHER PERSON AND WHETHER BASED IN CONTRACT OR TORT, SHALL BE REPAIR OR REPLACEMENT OF THE PRODUCT. IN NO EVENT WILL APERTURE PET AND LIFE BE LIABLE TO YOU OR ANY OTHER PARTY FOR ANY DIRECT, INDIRECT, GENERAL, SPECIAL, INCIDENTAL, CONSEQUENTIAL, EXEMPLARY OR OTHER DAMAGES ARISING OUT OF THE USE OR INABILITY OF TO USE THE PRODUCT (INCLUDING, WITHOUT LIMITATION, DAMAGES FOR LOSS OF BUSINESS PROFITS, BUSINESS INTERRUPTION, LOSS OF INFORMATION OR ANY OTHER PECUNIARY LOSS, DAMAGE TO YOUR AQUARIUM OR ANY AQUARIUM INHABITANTS), OR FROM ANY BREACH OF WARRANTY, EVEN IF APERTURE PET AND LIFE HAS BEEN ADVISED OF THE POSSIBILITY OF SUCH DAMAGES. IN NO CASE SHALL APERTURE PET AND LIFE'S LIABILITY EXCEED THE AMOUNT YOU PAID FOR THE PRODUCT. IF YOU DISAGREE WITH THESE TERMS AND CONDITIONS DO NOT USE THE AQUALLUMINATION LIGHTING PRODUCT.

## PRODUCT REGISTRATION

**PLEASE DO NOT DISREGARD APERTURE PET AND LIFE'S WARRANTY REGISTRATION**

**IMPORTANT:** Registration of this Aperture Pet and Life product must be completed within thirty (30) days from the date of purchase for the one (1) year Warranty Period to become effective. Otherwise, the Warranty Period for this Aperture Pet and Life product is thirty (30) days. **REGISTRATION:** Your product can be registered in any of the following ways: **Website:** To register online, visit <http://www.aquallumination.com/> Choose the "Support" link at the top of the page. Then, select the "Warranty Registration" link to register your product.

Some states do not allow the exclusion or limitation of incidental or consequential damages, so the above exclusions may not apply to you. Your Aperture Pet and Life's warranty is governed by the laws of the State of Minnesota, excluding its conflict of laws principles and excluding the provisions of the United Nations Convention on Contracts for the International Sale of Goods. This warranty gives you specific legal rights, and you may also have other rights, which vary from state to state.

**TECHNICAL SUPPORT:** This limited warranty is neither a service nor a support contract. Information about Aperture Pet and Life's current support offerings and policies can be found at <http://support.aquallumination.com>.

Copyright © Aperture Pet and Life LLC, Aquallumination, myAI and the AI Logo are registered trademarks of Aperture Pet and Life LLC. Orbit is a trademark of Aperture Pet and Life LLC. All rights reserved. Apple and the Apple logo are trademarks of Apple, Inc., registered in the U.S. and other countries. App Store is a service mark of Apple Inc. Android, Google Play, and the Google Play logo are trademarks of Google Inc.